

CONSUMER ADVANTAGES

Xevo Mid/Near is designed to be used as a second pair of glasses for presbyopes who perform activities at near or intermediate distances and need wider visual fields than a standard progressive lens can offer.

REDUCED VISUAL FATIGUE

More relaxed eyes.

IMPROVED DESIGN

Softer design compared to the last version with noticeably reduced swim effect and lateral distortion.

FASTER ADAPTATION

The adaptation to this lens is practically immediate.

IMPROVED FOCUS

Better ability to read text on digital displays.

DYNAMIC VISION

Easy and agile switch from the near to intermediate zone.

NATURAL POSITION

Ergonomically comfortable.

PROVIDE THE FOLLOWING DATA:

- Distance correction and addition power
- Range of Xevo Mid/Near
- Monocular PD
- Frame data
- Fitting height

All other personalization parameters are optional (pantoscopic angle, wrap angle, back vertex distance and near working distance).

LENS AVAILABILITY

- Xevo Mid/Near 1.3 m** – Clear vision up to 1.3 m
- Xevo Mid/Near 2 m** – Clear vision up to 2 m
- Xevo Mid/Near 4 m** – Clear vision up to 4 m
- Xevo Mid/Near 6 m** – Clear vision up to 6 m

MINIMUM FITTING HEIGHTS

14 mm, 18 mm

PLEASE NOTE

Xevo Mid/Near is available using Digital Ray-Path® and Smart Add technologies.

**Caution: Do not drive with these lenses because they do not provide distance vision.**

MOUNTING INSTRUCTIONS

For proper positioning of the lens in the frame, the invisible engravings must be considered. The fitting cross should be aligned with the center of the pupil. Use the laser marks for verification.



OCCUPATIONAL DESIGN

An occupational lens that enhances intermediate and near vision.





# Xevo Mid/Near

Provides comfort and natural ergonomic posture at near and intermediate distances.

Xevo Mid/Near is an occupational lens for intermediate and near distances that really brings visual comfort to the wearer. The step between fields is more dynamic offering **greater agility to change focus in different distances, especially when working with digital displays.**

## MORE RELAXED EYES AT THE END OF THE DAY.

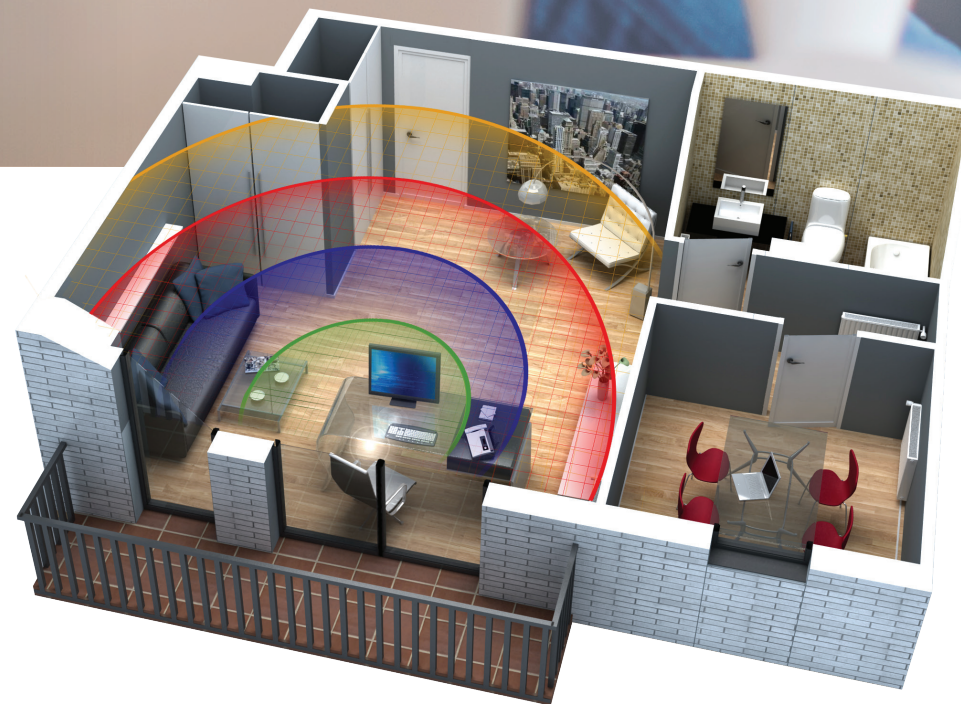
Single vision lenses lack near and intermediate zones and progressive lenses have a reduced intermediate zone. **Neither solution is favored by presbyopes** because visual comfort may be compromised and it takes a huge effort to focus.

Now with Xevo Mid/Near, presbyopes can work comfortably. **The near and intermediate vision regions cover the entire surface of the lens, ensuring wider optimized areas.** In addition, the soft design guarantees easy adaptation and **unbeatable comfort.**

## 4 VISION RANGES TO ADDRESS THE WEARER'S NEEDS.

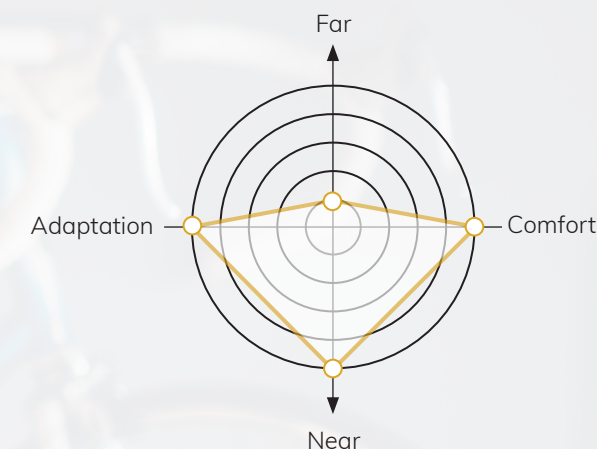
Xevo Mid/Near offers 4 vision ranges to cover all of the patient's needs. Ask your patient what working distance is needed to focus comfortably so you can prescribe one of the 4 options.

- **Xevo Mid/Near 1.3 m**  
Clear vision up to 1.3 m
- **Xevo Mid/Near 2 m**  
Clear vision up to 2 m
- **Xevo Mid/Near 4 m**  
Clear vision up to 4 m
- **Xevo Mid/Near 6 m**  
Clear vision up to 6 m



## SMART ADD TECHNOLOGY ALLOWS THE EYES TO BE RELAXED WHEN VIEWING SCREEN DISPLAYS

Xevo Mid/Near incorporates Smart Add, the technology that improves the patient's visual experience when using digital devices. This technology assists with changes in focus at different working distances in a more agile and accurate way when the patient is working or reading simultaneously with different screens.



## TARGET MARKET

Wearers aged 45 and up performing near and intermediate tasks, depending on their visual range needs:

- Computer screen
- Tablet/Smartphone
- Reading
- Painting
- Cooking
- Gardening



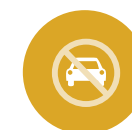
Smart Add



Near vision enhanced



Enhanced for computers



Not for driving